

# CompuSat Control Software

Thank you for upgrading your CompuSat Satellite Earth Station control and automation software.

CompuSat can expand to accommodate new equipment that is added to your earth station, and CompuSat can be customized to meet your unique needs.

Your software can be installed on any computer system that is running one of the following operating systems:

- Microsoft Windows XP (Recommended)
- Microsoft Windows NT
- Microsoft Windows 2000

To use your software, all you need to do is install it and follow a few basic instructions, as described in this document.

## Installation

Installation is simple: all that you need to do is run the installer program, SETUP\_HOST.EXE. After installation is complete, a new folder named c:\compusat.xxx is added to your hard drive. The xxx will change based on the version of CompuSat installed. For example, version 2.30 will install by default to c:\compusat.230.

Your software is available on the CompuSat FTP site. Click on the SETUP\_HOST program to download or install the new version.

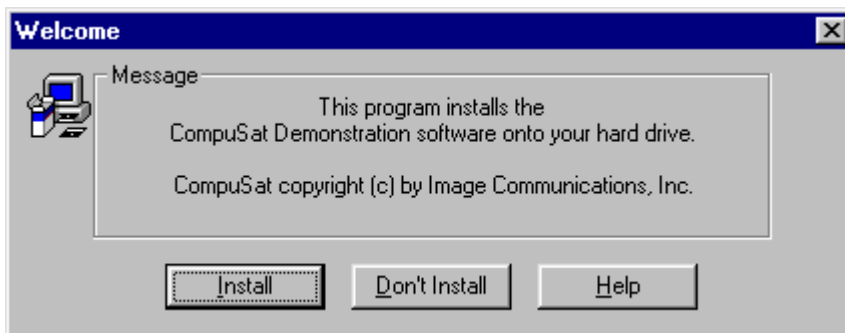
### NOTE

The CompuSat software does not install files on your system other than those in the CompuSat folder. To remove the software, you can simply delete the CompuSat folder, which removes all files created during the installation process.

## *Using the Installer*

The opening screen of the installer allows you to install the software or cancel the installation, as shown in Figure 1.

Figure 1 The installer opening screen

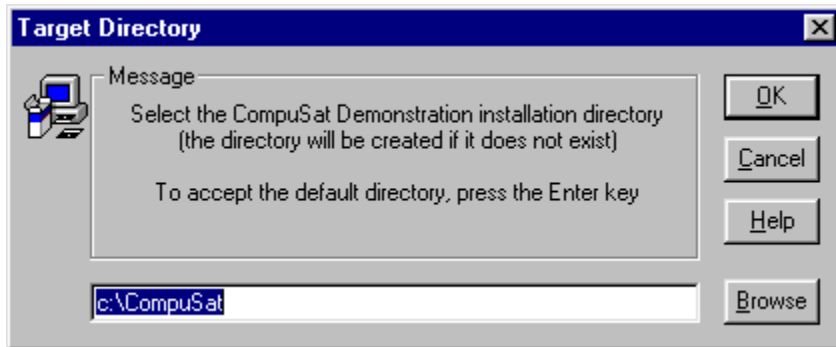


If you press the *Install* button, you are prompted to choose the directory in which you want the software installed, as shown in Figure 2. The directory `c:\CompuSat.xx` is selected by default.

If you enter the name of a directory that does not yet exist, the installer program will create the directory for you.

All of the CompuSat files are installed into the directory that you select.

**Figure 2** The installer directory selection screen



## ***Upgrading your Site Data***

The CompuSat installation program installs CompuSat to a directory based on the current release version number. For example, version 2.06 is installed into the directory "`c:\compusat.206`" by default.

After the installer copies your files to the hard disk, you will be asked, "Copy data from an existing CompuSat installation?". Answer, "YES" and select the directory of your current CompuSat installation. Your data files will be copied from this directory to the new installation directory.

If, for any reason, the new version on CompuSat does not work properly, your old installation is left intact so that you can still run the older version.